

**PERFECT DOUGLAS SUITE**



**Property Features**

**Lease Rate:** \$1,330/month  
**Lease Type:** NNN  
**Space Size:** 1,063 SF  
**Zoning:** Limited Industrial  
**Traffic Count:** 15,392 VPD

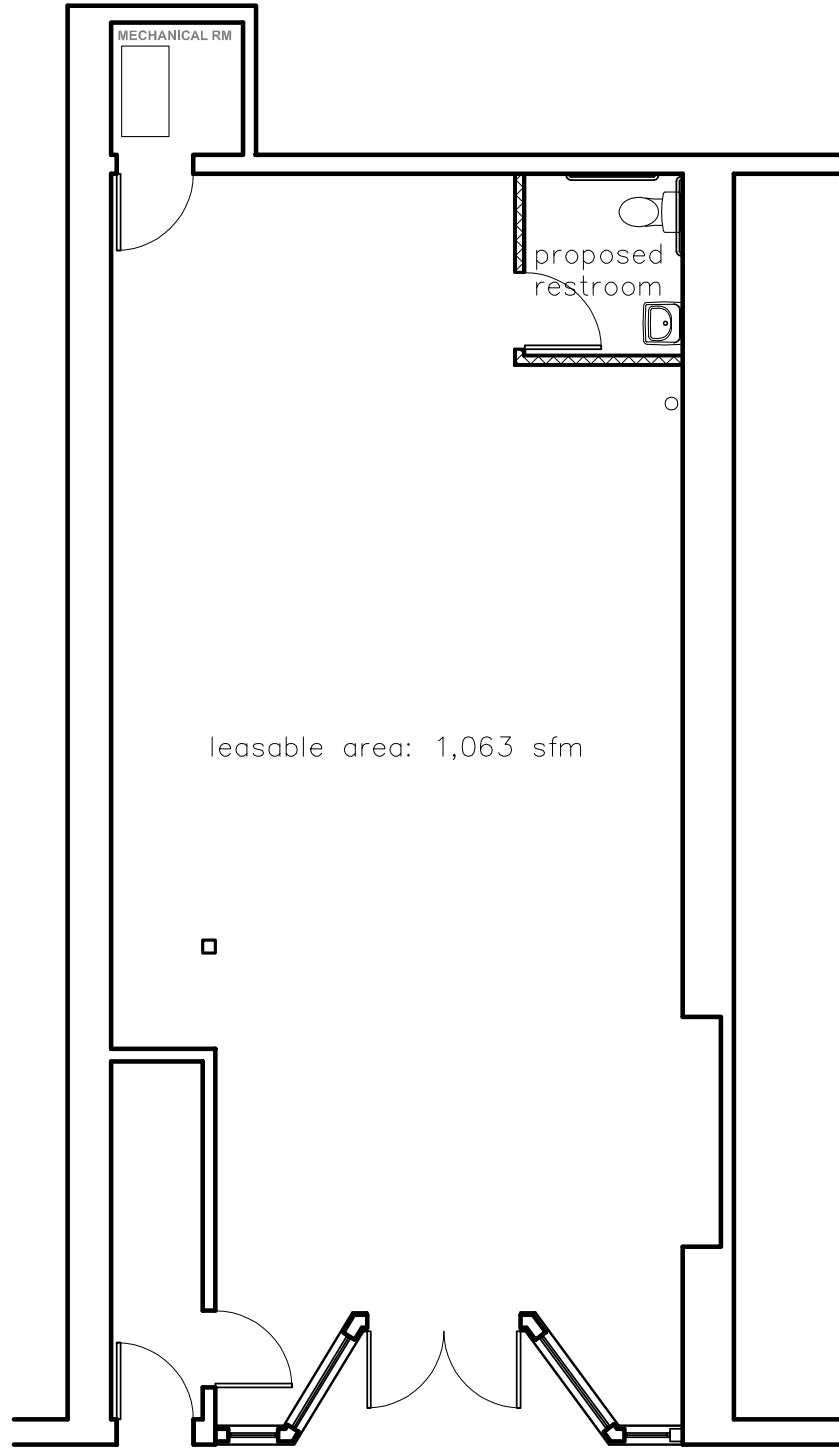
**Property Highlights**

- Great Douglas Frontage
- Popular intersection
- Ground floor retail
- Amazing Natural Light

**CONTACT**

**JAKE RAMSTACK**  
jake@insitere.com  
O 316 618 1100  
D 316 221 8503





CONTACT

JAKE RAMSTACK  
jake@insitere.com  
O 316 618 1100  
D 316 221 8503





## Area Highlights

### Area Neighbors:

La Galette, TJ's Burger House, Ruben's Mexican Grill, Credit Union of America, Picasso's, Yokohama Ramen Joint, Pizza Hut, Bicycle X-Change, Delano Barbecue, Subway, McDonald's, QuikTrip, Braum's, Monarch, Wind Surge Stadium, Century II, Central Business District, and more!



No. of Households  
45,614



Seneca & Douglas  
12,945



Population  
111,662

### CONTACT

JAKE RAMSTACK  
jake@insitere.com  
O 316 618 1100  
D 316 221 8503

